

Innovative Laminations Company



INNOVATIVE LAMINATIONS
COMPANY, INC
A **trotec** COMPANY



Who Is Innovative Laminations?

Discover your premier partner for exquisite decorative laminates. With an extensive array of stocked raw materials, we tailor our production to meet your unique requirements, even for short runs. This ensures swift, dependable access to premium-quality laminates for you and your valued customers.

At Innovative Laminations Company, we've been leading the industry since 2000, crafting high-quality thermoplastic decorative laminates. As part of the TroGroup since 2014, we continue to innovate and offer top-tier solutions globally. From our 40,000 square foot facility in North Carolina, our experienced team manufactures custom OEM materials for various markets and applications. With ISO 9001:2015 certification, we ensure the highest standards in quality.

Our products cater to diverse industries, including automotive, marine, badging, and more. We specialize in thermoformable laminates, printable laminates, and offer various plastic substrates like ABS, KYDEX® and polycarbonate. Our production capabilities feature eight laminating lines and quick turnaround for prototypes and short runs. Plus, with low minimum order quantities, we provide infinite customization options.

Specializing in dedicated market segments sets us apart. Our focus empowers us to become industry experts, deeply knowledgeable about the unique demands of each market. This expertise ensures that we deliver premium products precisely tailored to the customers' needs. Moreover, our global distribution network enhances our capabilities. Leveraging this network, we effectively distribute laser and engraving sheet materials through our extensive network of 14 Trotec materials subsidiaries worldwide.

Customer satisfaction is our highest commitment. With us, projects are in safe hands, backed by our guarantee of reliability and consistency of color, pattern and material performance for long term programs or repeat projects over the years. Whether customers are in automotive manufacturing or need thermoformable solutions, we've got them covered. Let us help you bring small to big projects to life with our expertise and top-of-the-line laminates.

tro/GROUP

trotec / Materials

What Products Do We Manufacture?

We are a custom manufacturer of premium, decorative plastic sheet & roll stock. Customers benefit from manufacturing per order, to customer specifications for ongoing programs or for one-time projects. This ensures that we identify and define all performance specifications and requirements for your application, guaranteeing satisfaction and success. We recommend the best combination of approximately 1 to 3 mil patterned and clear performance films with ideal plastic substrate, guiding the customer for best yield of materials for their custom gauge and sheet size. A wide range of plastic substrates and films on stock allows us to fulfill prototype and small to large projects in a short amount of time.



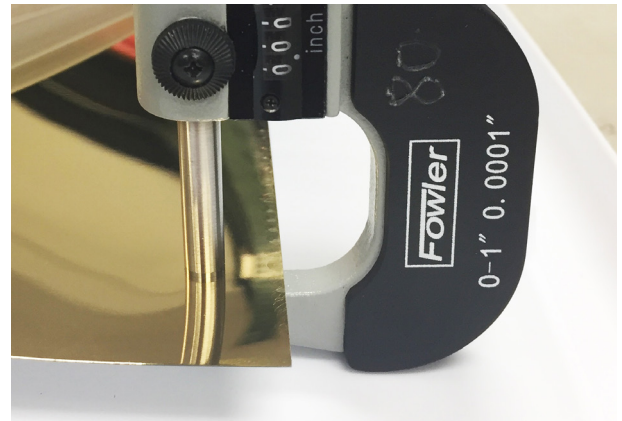
Premium Performance Capabilities of our Laminates

Our premium thermoplastic decorative laminates ensure that we meet unique needs with precision and excellence. They feature exceptional performance properties, including:

- Thermoformable for Interior & Exterior Applications
- Varying Gloss Levels (Matte, Satin, High Gloss)
- Printable
- Chemical Resistance
- Abrasion/Scratch Resistance
- Clear & Light Transmissive Substrates for Backlighting
- Flammability Ratings of UL94 HB & V-0
- Formable Chromes
- Textured Laminates
- UV Stability

Premium Laser and Rotary Engraving Sheet Laminates

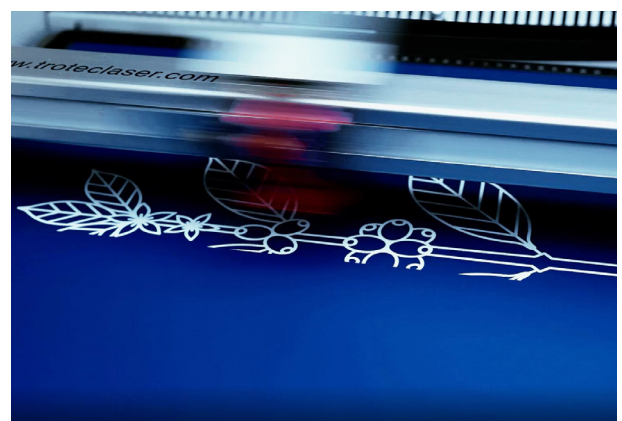
Our top-of-the-line laminated sheet materials are specifically designed for high-performance laser and rotary engraving. They have a micro surfaced coating on a high-quality extruded core, which allows for detailed engravings at a high production speed. Within the portfolio, you will find a wide range of various colors, effects, gauges and wear and tear characteristics suitable for nearly any application.



Plastic Substrate Options

The plastic substrate is the base or core that we laminate our ~1 to 3 mil performance films to. The plastic substrate selection can be critical depending on the requirements of the application. Is the application interior or exterior? Does it require specific impact resistance? Does it need to pass certain flammability specifications? Plastic substrates are offered in gauges ranging from .001" to .500" thick.

- ABS
- Acrylic (Impact Modified, Extruded & Continuous Cast)
- HIPS
- KYDEX®
- Polycarbonate
- PETG
- TPO
- PET





Custom Manufacturer for Specific Needs

As a custom manufacturer, we are able to provide any plastic material, color, pattern and finish for our customer's specific needs. We continue to grow and develop our expansive product line, producing innovative and technically advanced, decorative plastic offerings for a variety of market segments and applications.

While we have thousands of raw materials in stock from which to custom manufacture product, we also regularly custom match film colors, plastic core colors, develop new patterns and performance enhancing films per requirement. Depending on the development or match, we may need a sample piece of a target color or pattern, pantone or other color reference number and additional detail regarding the application and performance requirements and specifications.

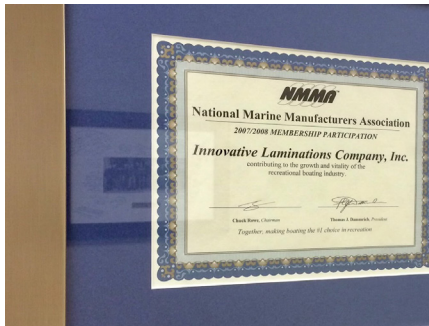
Our highly knowledgeable team qualifies each & every project to quote for custom, modified product, ensuring that all performance specifications and requirements for the customer application are identified and defined.

Explore Our Markets

Our laminates are utilized across diverse industries to satisfy their premium design and performance requirements. Our decorative plastic sheet and roll stock allow for customers to fabricate our laminates in a multitude of ways, whether they are thermoforming parts for automotive dash panels, trim or badging, profile wrapping our material to MDF for picture frame applications or printing, laser cutting or routing our material for POS/POP displays or store fixtures.



Automotive



Profile Wrapping



Dashboards for Leisure vehicles manufacturing



Vacformers



In Mold Decorating



Heavy Truck



Badging and Detailing



Marine



Furniture



POS / POP Display



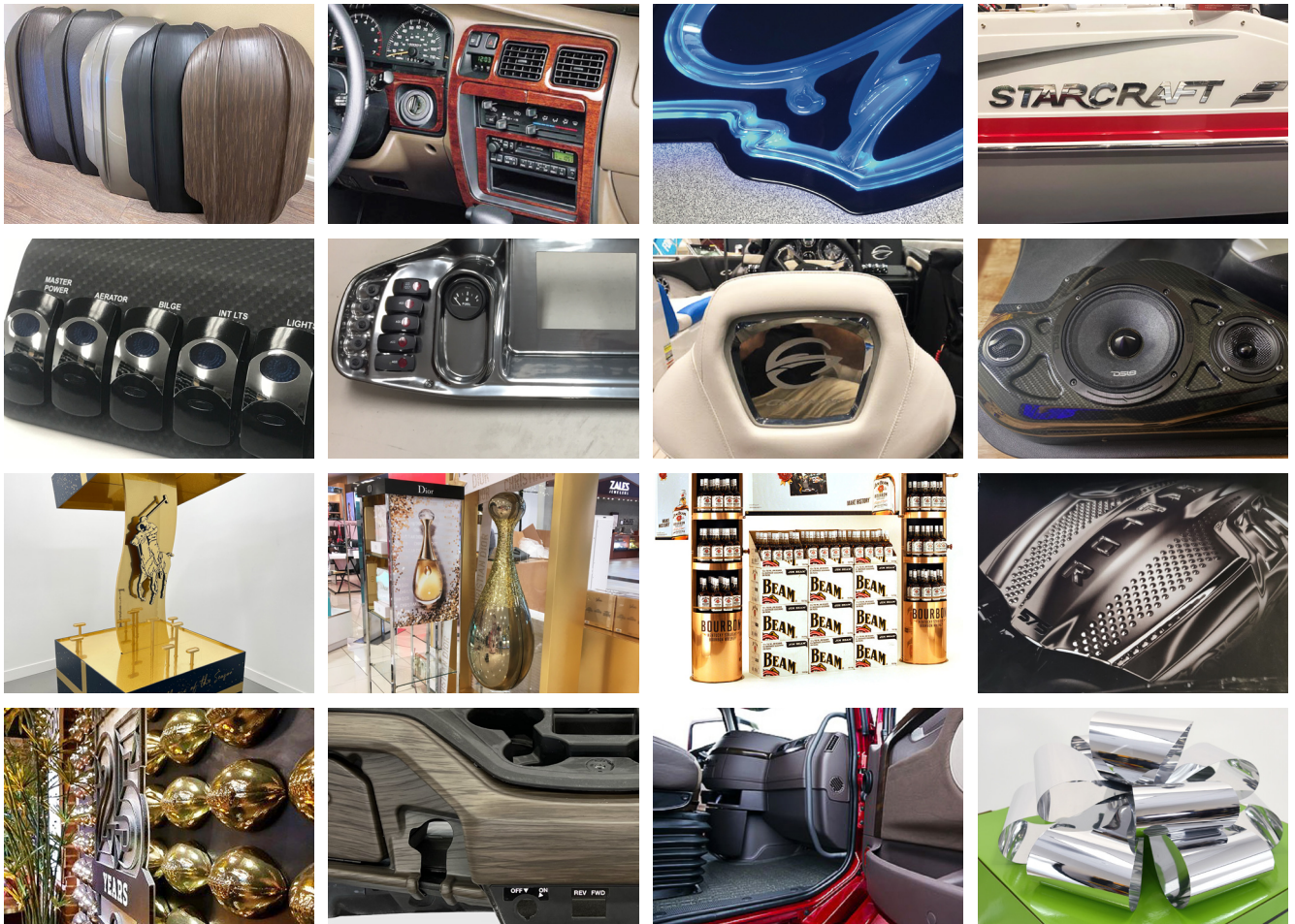
Aircraft

Production Capabilities

Experience efficiency and customization: With 8 laminating lines and the ability to handle gauges from .004 to .500 mil, we offer versatility in sheet sizes up to 72" wide and lengths up to 144". Our roll stock options, along with a 3M Pressure Sensitive Adhesive Converter, ensure tailored solutions. As short run specialists, we excel in custom manufacturing, providing quick turnaround on prototypes and low minimum order quantities for infinite customization. Trust us for premium quality and unparalleled service.



What Our Clients Produce



Contact points at ILC

USA:
ilc-customerservice@troteclaser.com

Europe:
ilc-customerservice-europe@troteclaser.com



INNOVATIVE LAMINATIONS
COMPANY, INC
A **trotec** COMPANY